

Your Sobi Nurse Case Manager

Dedicated **support** for your primary HLH treatment journey

If you or your loved one have been diagnosed with primary HLH, you may be eligible to enroll in Gamifant Cares. In addition to other resources, Gamifant Cares offers a Nursing Support Program that pairs patients with dedicated Sobi Nurse Case Managers to help ensure the best possible support.

This brochure provides some information about the Nursing Support Program offered through Gamifant Cares and how to enroll.

HLH=hemophagocytic lymphohistiocytosis.

What Is GAMIFANT?

GAMIFANT is a prescription medicine used for the treatment of adults and children (newborn and older) with primary hemophagocytic lymphohistiocytosis (HLH) whose disease has come back or progressed, or other medicines have not worked well enough or cannot be tolerated.

IMPORTANT SAFETY INFORMATION

GAMIFANT can cause serious side effects, including infections.

GAMIFANT is a medicine that affects your immune system and may lower the ability of your immune system to fight infections. GAMIFANT may increase your risk of serious infections that can lead to death. These infections include tuberculosis (TB), histoplasmosis, herpes zoster infection (shingles), and other infections caused by viruses, fungi, or bacteria that can spread throughout the body. Your healthcare provider will:

- Test you for TB before you start treatment with GAMIFANT
- Treat you with a medicine for TB if you are at risk for TB or if you have a known positive TB test. Infections are common in people treated with GAMIFANT

Please see Important Safety Information on pages 2-3.
[Click here](#) for full Prescribing Information for Gamifant.

What Is GAMIFANT?

GAMIFANT is a prescription medicine used for the treatment of adults and children (newborn and older) with primary hemophagocytic lymphohistiocytosis (HLH) whose disease has come back or progressed, or other medicines have not worked well enough or cannot be tolerated.

IMPORTANT SAFETY INFORMATION

GAMIFANT can cause serious side effects, including infections.

GAMIFANT is a medicine that affects your immune system and may lower the ability of your immune system to fight infections. GAMIFANT may increase your risk of serious infections that can lead to death. These infections include tuberculosis (TB), histoplasmosis, herpes zoster infection (shingles), and other infections caused by viruses, fungi, or bacteria that can spread throughout the body. Your healthcare provider will:

- Test you for TB before you start treatment with GAMIFANT
- Treat you with a medicine for TB if you are at risk for TB or if you have a known positive TB test. Infections are common in people treated with GAMIFANT

Before starting GAMIFANT, tell your healthcare provider all of your medical conditions and if you:

- Had TB in the past, or if you or a member of your family have been in recent close contact with someone with TB
- Have had a positive TB skin test (purified protein derivative test)
- Currently have an infection or have a history of infections, including histoplasmosis or herpes zoster (shingles)
- Are being treated for an active infection
- Have symptoms of an infection such as fever; sweat and chills; cough; breathing problems; blood in mucus (phlegm); or warm, red painful skin or sores on your body
- Are pregnant or plan to become pregnant. It is not known if GAMIFANT can harm your unborn baby
- Are breastfeeding or plan to breastfeed. It is not known if GAMIFANT passes into your breast milk. Talk to your healthcare provider about the best way to feed your baby during treatment with GAMIFANT

Please see additional Important Safety Information on page 3.
[Click here](#) for full Prescribing Information for Gamifant.

IMPORTANT SAFETY INFORMATION (continued)

Your healthcare provider will give you medicine to help prevent certain infections before you receive GAMIFANT

Tell your healthcare provider about all the medicines you take, including prescription and over-the-counter medicines, vitamins, and herbal supplements

After starting GAMIFANT, tell your healthcare provider if:

- New symptoms of an infection appear
- Symptoms of an infection that you already had when starting GAMIFANT worsen. Your healthcare provider will monitor you closely for signs and symptoms of infections during treatment with GAMIFANT

GAMIFANT can cause serious infusion reactions.

These are common, can also be severe, and can happen during or shortly after treatment with GAMIFANT. Your healthcare provider may temporarily stop your infusion and treat your symptoms before continuing your infusion if you have severe infusion reactions. Tell your healthcare provider right away if you get any of the following symptoms:

- Skin redness
- Chills
- Itching
- Chest pain
- Fever
- Shortness of breath
- Rash
- Nausea or vomiting
- Excessive sweating
- Lightheadedness or dizziness

The most common side effects of GAMIFANT include high blood pressure (hypertension) and fever.

These are not all the possible side effects for GAMIFANT. For more information, ask your healthcare provider. You can also see the Full Prescribing Information for GAMIFANT, including Patient Information at <https://gamifant.com/pdf/Full-Prescribing-Information.pdf>.

To report suspected adverse reactions, contact Sobi North America at 1-866-773-5274 or FDA at 1-800-FDA-1088.

Please see additional Important Safety Information on page 2. [Click here](#) for full Prescribing Information for Gamifant.

About Sobi Nurse Case Managers

Sobi's dedicated nurses are here for you. They have been specially trained to provide you and your family with personalized support throughout your primary HLH treatment journey. All of the Nurse Case Managers are registered nurses who have experience caring for patients and families like yours. They can provide you with support in the following ways:

Learning about primary HLH

Nurses can help you better understand the disease and provide you with educational resources.

Starting treatment with Gamifant

Nurses can answer any questions you may have during the treatment journey and help you understand how Gamifant may be able to help.



Qualifications

- Multiyear careers in various settings, including emergency room, intensive care, critical care, cardiac, and neurology
- Infusion care experience
- Nurse education instruction
- Patient advocacy and patient case management experience
- Multiple certifications

Please see Important Safety Information on pages 2-3.
[Click here](#) for full Prescribing Information for Gamifant.

To be paired with a Sobi Nurse Case Manager, you first enroll in Gamifant Cares

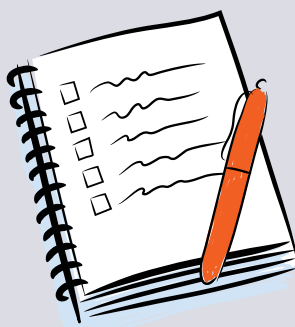
WAYS TO ENROLL

gamifant cares[™]
Support for the journey ahead

1 GamifantCares.com
(Click "Enroll now")

2 **Prescription and
enrollment form**
(Provided by doctor)

3 **Patient/caregiver
consent form**
(Provided by doctor)



When you enroll in Gamifant Cares, you will also have the opportunity to enroll in the Nursing Support Program. In addition to the Nursing Support Program, Gamifant Cares provides other types of resources and assistance, including help understanding insurance benefits and financial assistance information for eligible patients.

Once you are enrolled, a Nurse Case Manager will reach out to you to schedule a time to discuss the nursing support program in more detail. You will also receive a welcome kit with helpful resources.

During your Gamifant treatment journey, your Nurse Case Manager will partner with you to make sure you have all the information you need and answer any questions you may have.

**We look forward to helping you and
your family during this difficult time.**



Please see Important Safety Information on pages 2-3.
[Click here](#) for full Prescribing Information for Gamifant.

gamifant *cares*™

Support for the journey ahead

Visit

GamifantCares.com



To enroll in the Nursing Support Program

Please see Important Safety Information on pages 2-3.
[Click here](#) for full Prescribing Information for Gamifant.

